

**Receiver**
**From**

 Society  
 Reference  
 Address  
 Phone  
 Fax  
 E-mail

**Item n° :**

503110304

**Model :**

NOVABOX 30/300.1

**Pump data**

Pressure rating :

Min. fluid temperature :

Max. fluid temperature : 50 °C

Max. Ambient temperature :

**Requested data**

 Flow : 0 m<sup>3</sup>/h

Head : 0 m

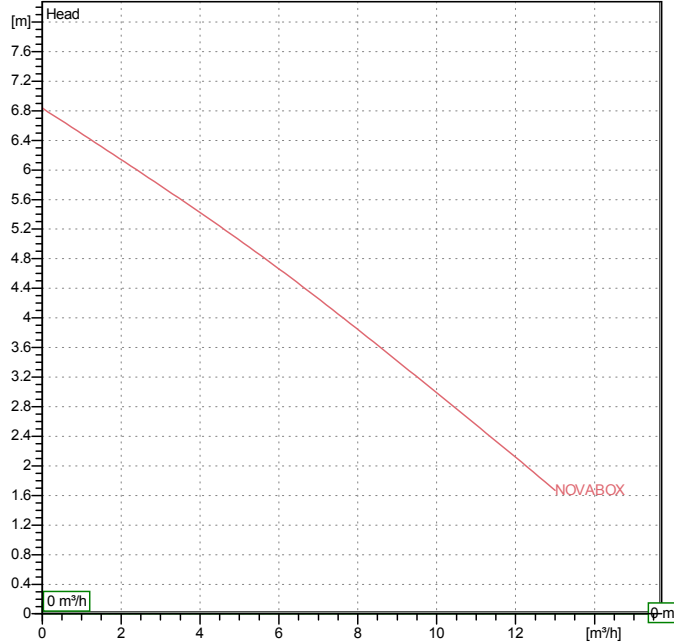
Fluid : Water, pure

Fluid Temperature : 20 °C

 Density : 998.3 kg/m<sup>3</sup>

 Kinematic viscosity : 1.005 mm<sup>2</sup>/s

Vapor pressure : 100 kPa

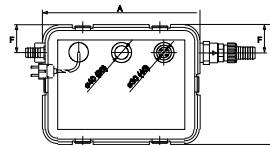
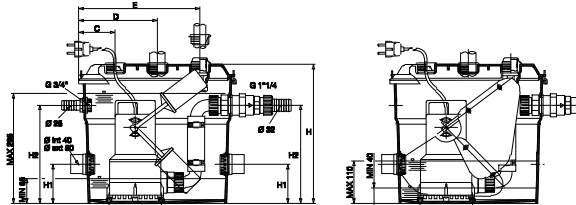
**Curve tolerance according to ISO 9906**

**Hydraulic data (duty point)**

Flow :

Head :

**Materials**

Tank	Technopolymer
Unions	Technopolymer
Fitting	Technopolymer
Pipe	Rubber
Non-return valve OR Gasket	EPDM
Non-return valve	Technopolymer
Impeller	Technopolymer


**Motor data**

Motor brand : DAB

Nominal power P2 : 0.22 kW

Rated voltage : 1~ 220-240 V

50 Hz

Nominal current : 1.5 A

Number of poles : 2

Rated speed : 2850 rpm

Degree of protection : IP 68

**Weight :** 9.2 kg

**Dimensions in mm**

A	407	H2	254		
B	309				
C	94				
D	204				
E	314				
H	360				
H1	100				

**Pump connection**

 Suction side : /  
 Discharge side : 1" 1/4 G / --



# PERFORMANCE CURVES

24/03/2016

Page 2 / 3

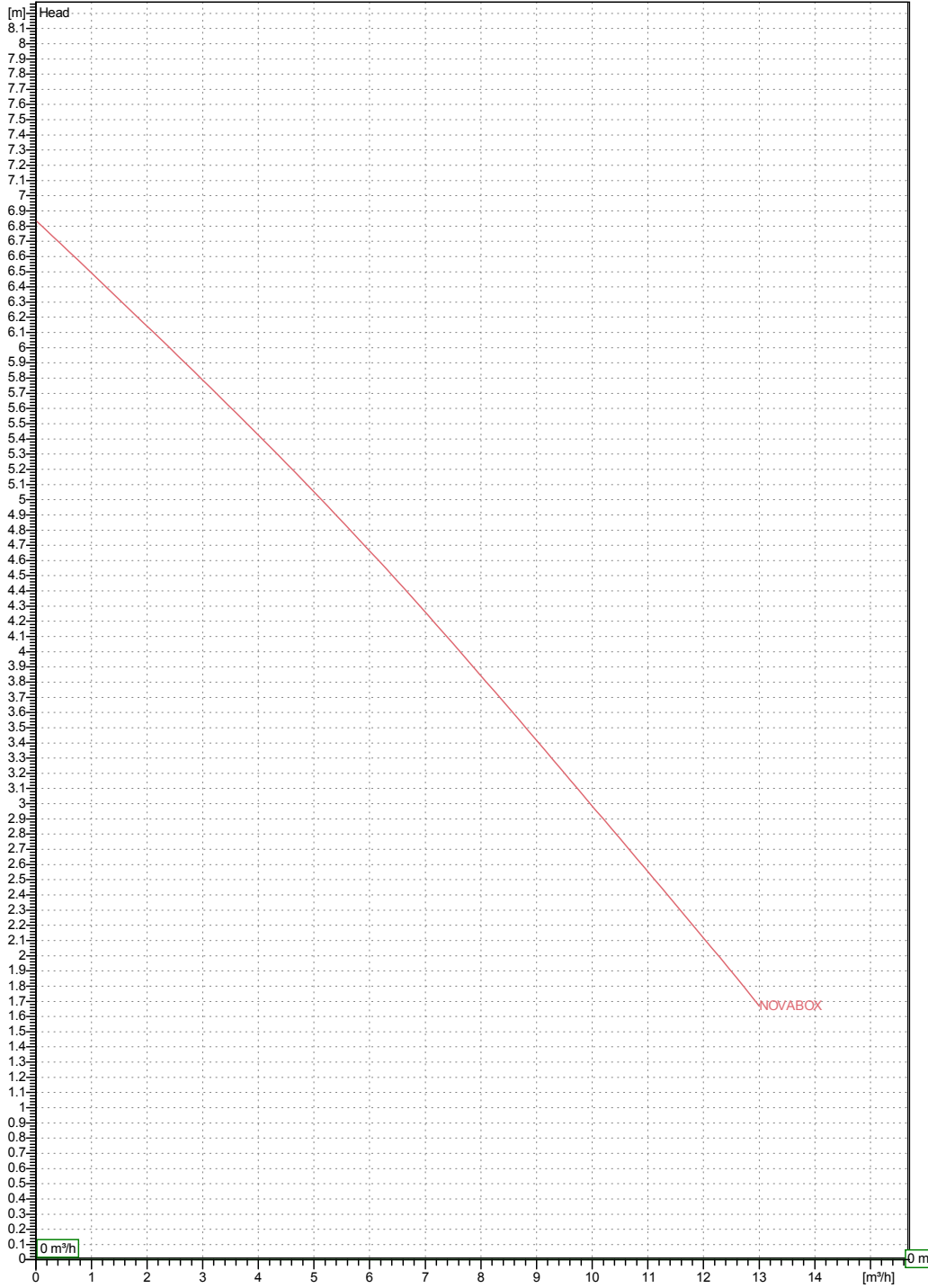
Receiver

From

Society  
Reference  
Address  
Phone  
Fax  
E-mail

## NOVABOX 30/300.1

Curve tolerance according to ISO 9906



Hydraulic data (duty point)

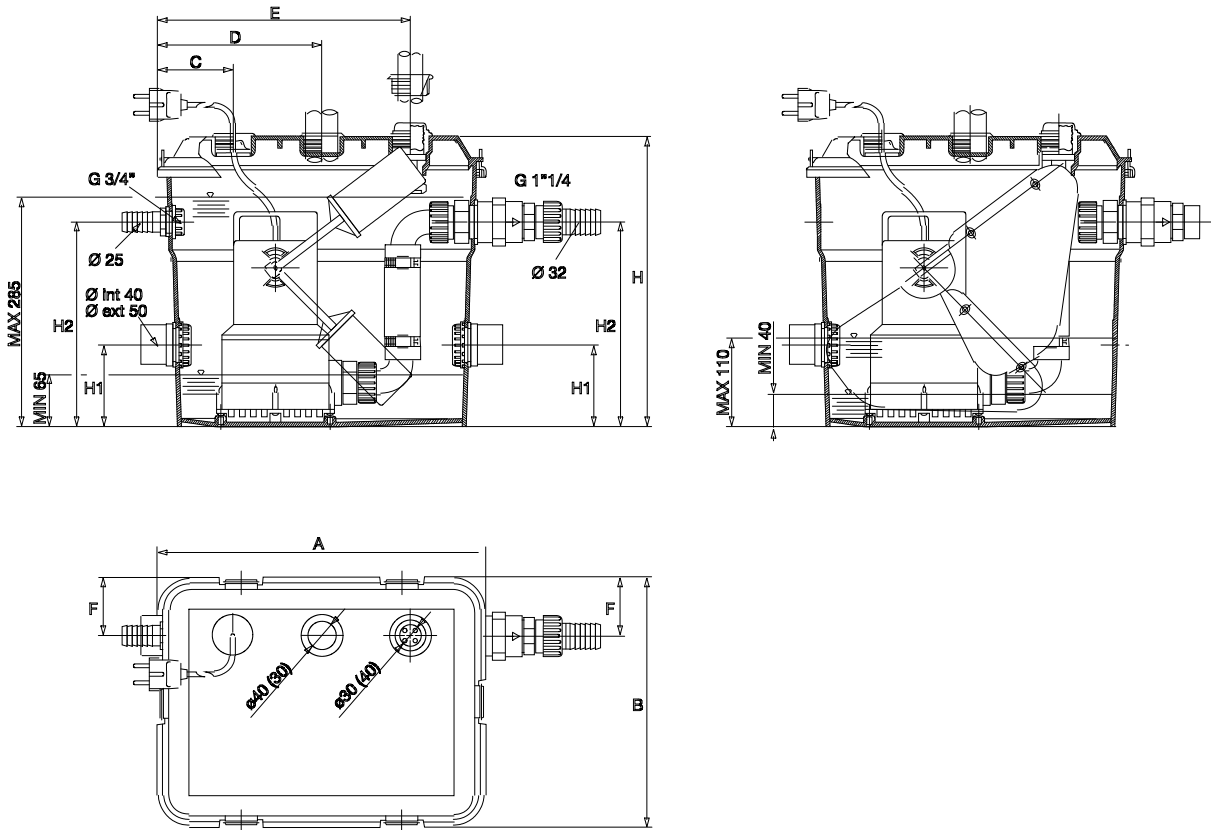
Suction side :	Discharge side : 1 " 1/4 G --	Flow : 0 m³/h	Head : 0 m	Rated speed : 2850 rpm
Project	Project ID	Created by	Created on <b>24/03/2016</b>	

Receiver

From

 Society  
 Reference  
 Address  
 Phone  
 Fax  
 E-mail

## NOVABOX 30/300.1


**Dimensions in mm**

1	A	407				
2	B	309				
3	C	94				
4	D	204				
5	E	314				
6	H	360				
7	H1	100				
8	H2	254				

**Pump connection**

Suction

 Discharge  
 1 " 1/4 G  
 -

Project

Project ID

Created by

Created on

**24/03/2016**